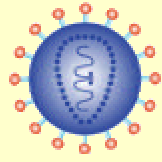
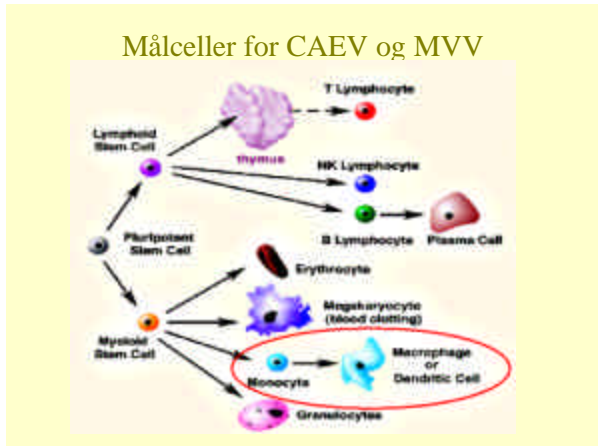
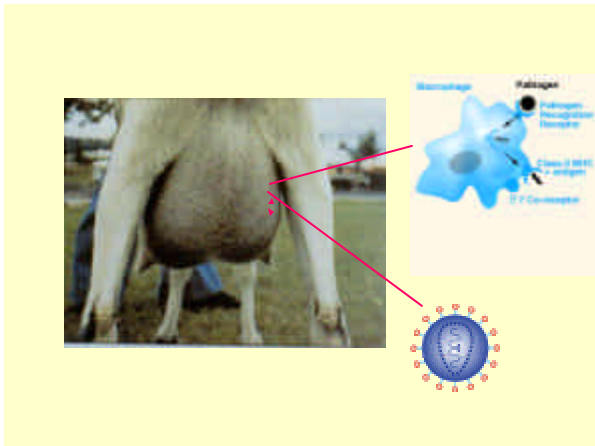
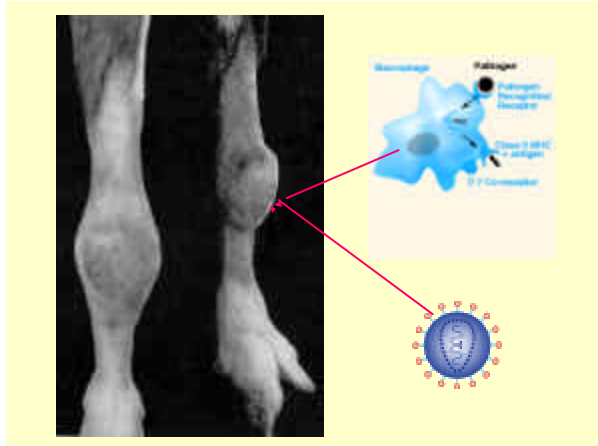
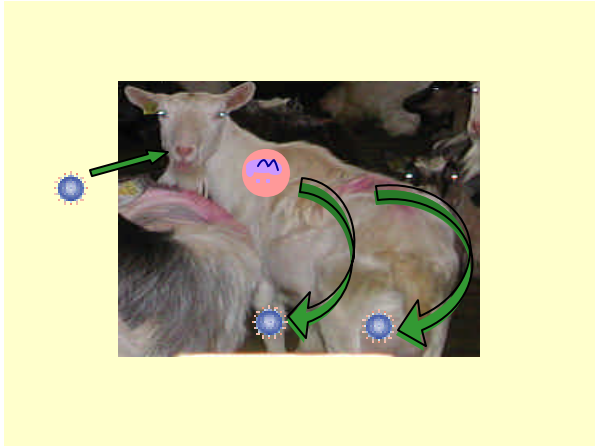


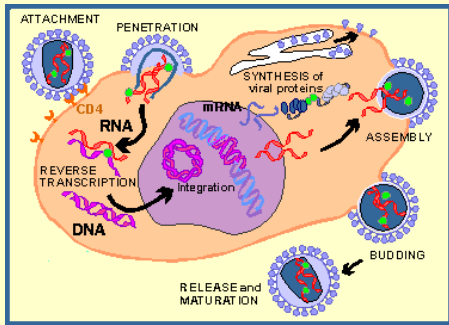
CAEV

- Caprin arthritt encefalitt virus
- Infeksjonen er utbredt i den norske geitepopulasjonen

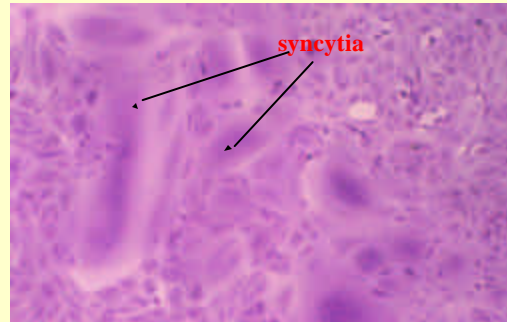




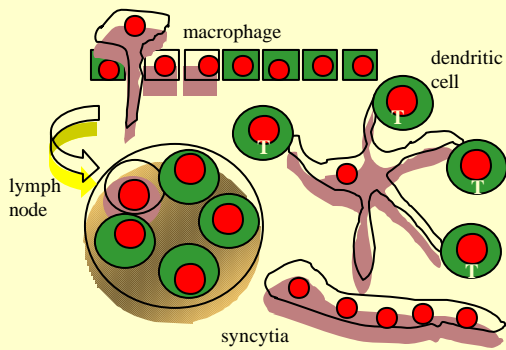
Life cycle of lentiviruses



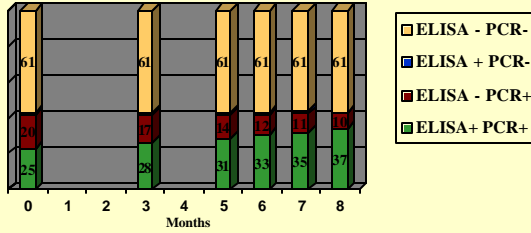
Syncytier, kjempeceller



Immunrespons

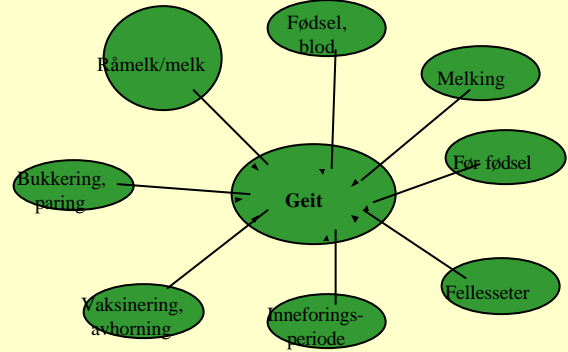


Delayed Seroconversion in CAEV-infected Goats

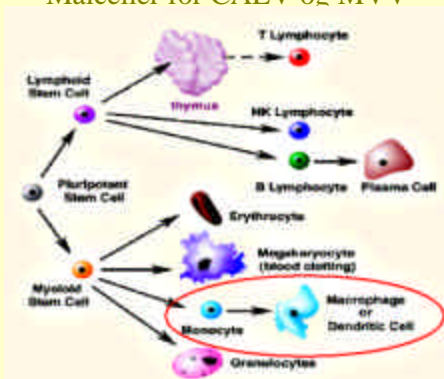


Rimstad 1993

Smittepress CAEV



Målceller for CAEV og MVV



Råmelk/melk

- Angis i litteraturen som viktigste smittevei
- "Aldersuavhengig" smittevei
- Rimelig grunn til å anta at maternelle antistoffer i råmelk har innvirkning på replikasjon av virus i mottager av råmelk, dvs tid til serokonvertering

Bukking paring

- Nærkontakt
- Kontakt mellom besetninger

Inneforings- periode

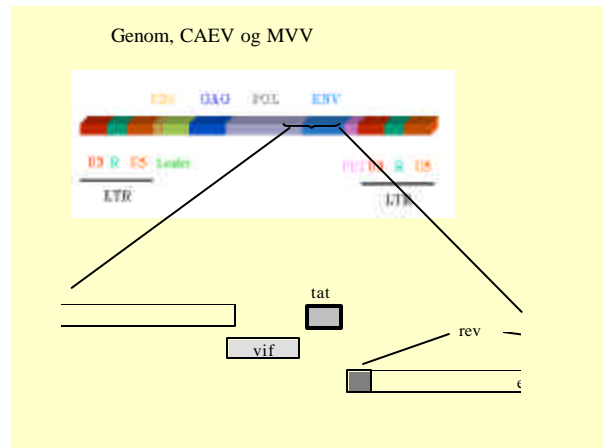
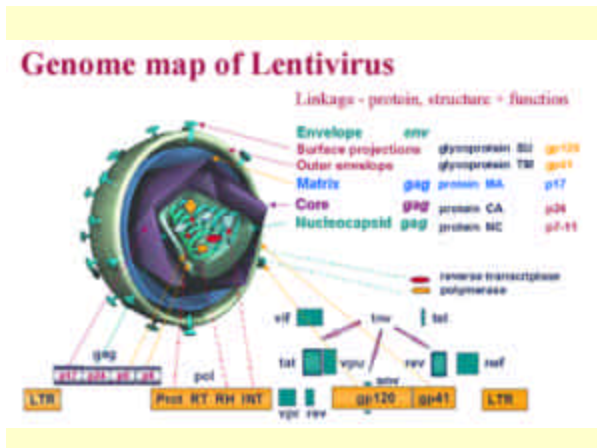
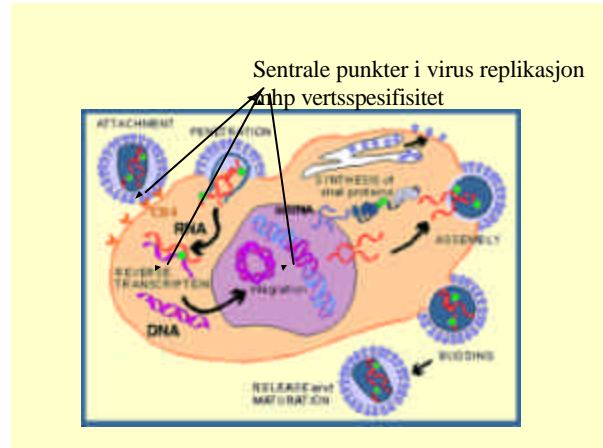
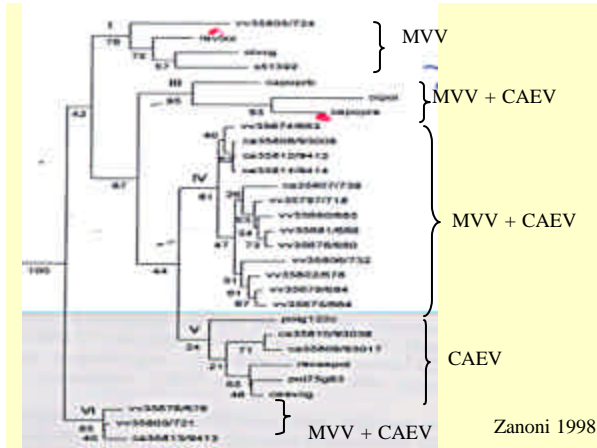
- Relativt lang periode her i landet
- Nærkontakt
- Mange potensielle smitteveier

Naturlig artskryssing av lentivirus mellom geit og sau



Faktorer som fremmer artskryssing hos virus

- Nærstående dyrearter
- Nærkontakt - blandingsbesetninger
- Høyt smittepress
 - CAEV er vidt utbredt
- Høy mutasjonsrate - genetisk variasjon



vif

tat

Caprin opprinnelse?

```
..L L E D E *  
      M N E E A .  
..TATTAGAAGATGAATGAAGAAGCA....
```

Ovin opprinnelse?

```
E S I F D *  
      M E E A P .  
GAATCAATATTTGACTAATGGAGGAGGTCC
```

Genetiske særtrekk



-typisk:



-typisk:

- Prototype isolat CAEV-Co
- *vif-tat* overlapping
- Prototype isolat MVV 1514, EV1 og SA-OMVV
- LTR regionen
- Leader SU - rev gen

Biologisk karakterisering

Replikasjon i ulike celler

Målceller *in vivo*:



Monocyttter, makrofager og dendrittiske celler



Replikerer i:

- GSM (FOS, SCP)
- MDBK

Replikerer i

- FOS, SCP, GSM
- MDBK, EK, HeLa, Vero, DU24, BHK21..

Ulike reseptorer ?